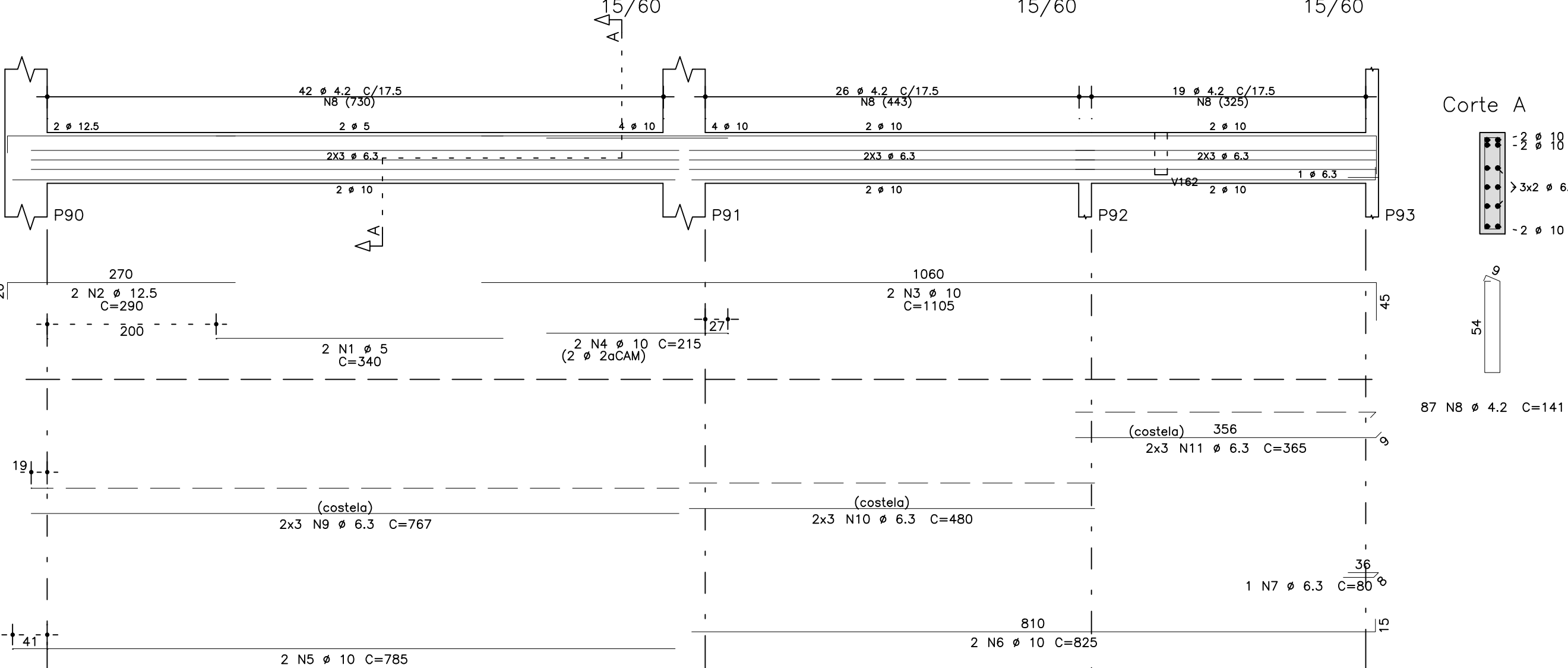
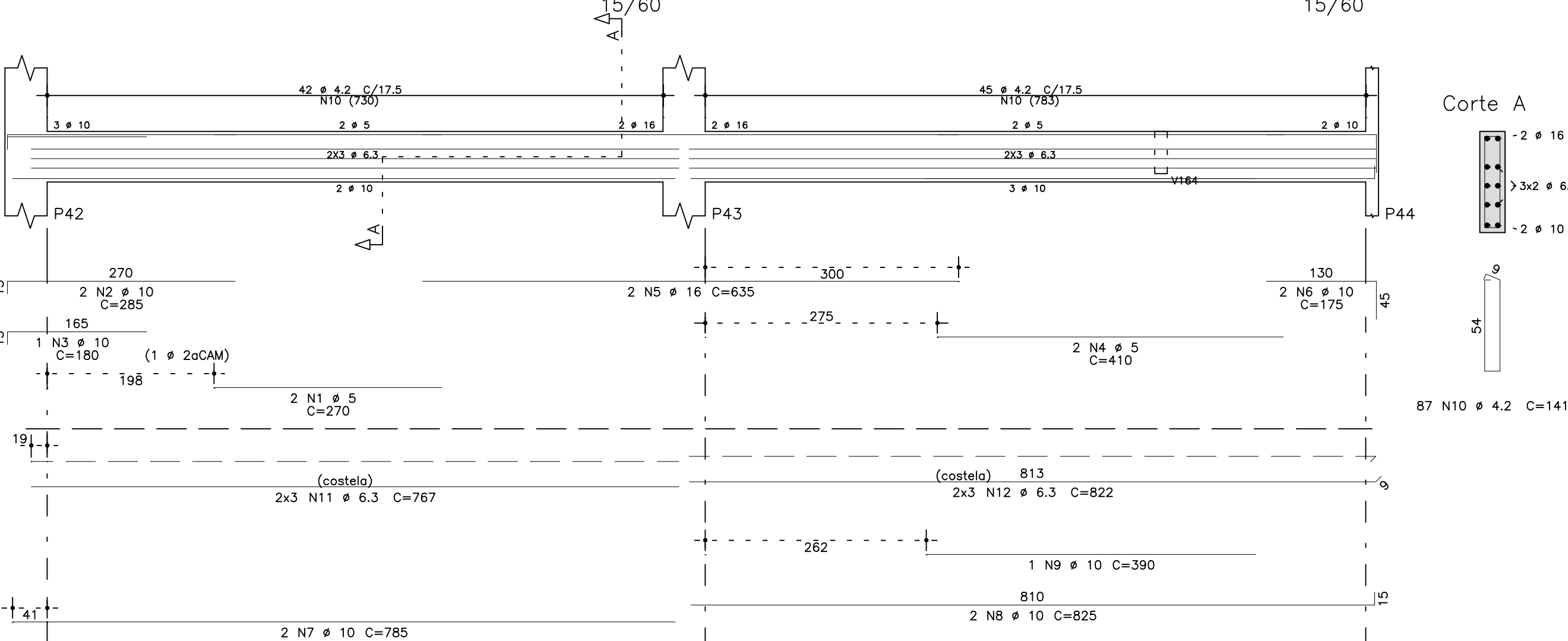


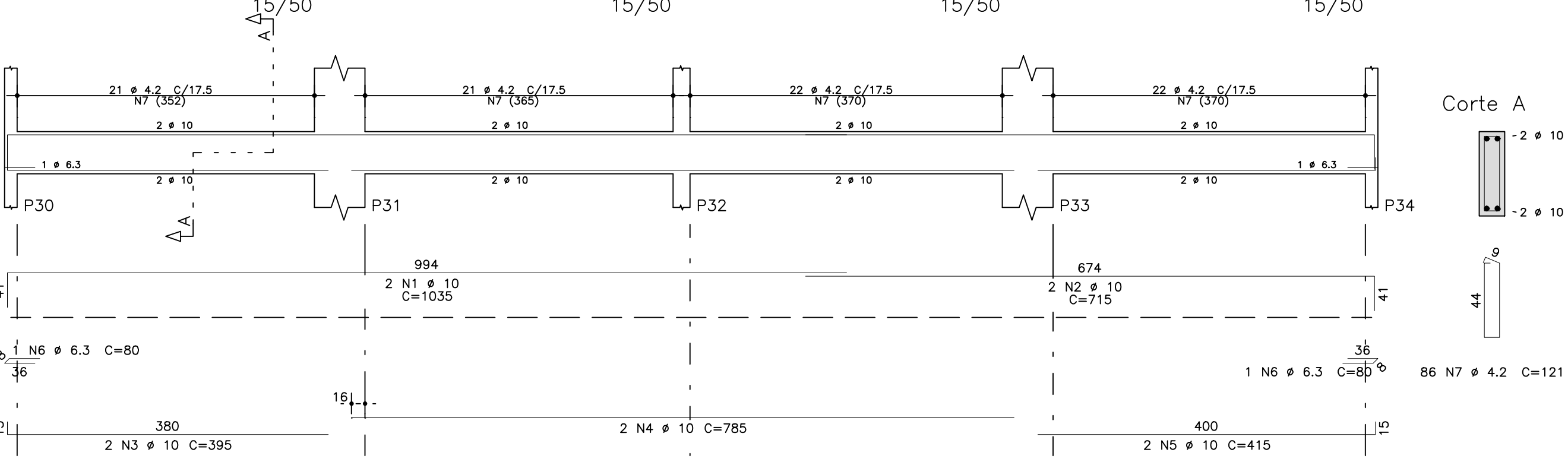
V123



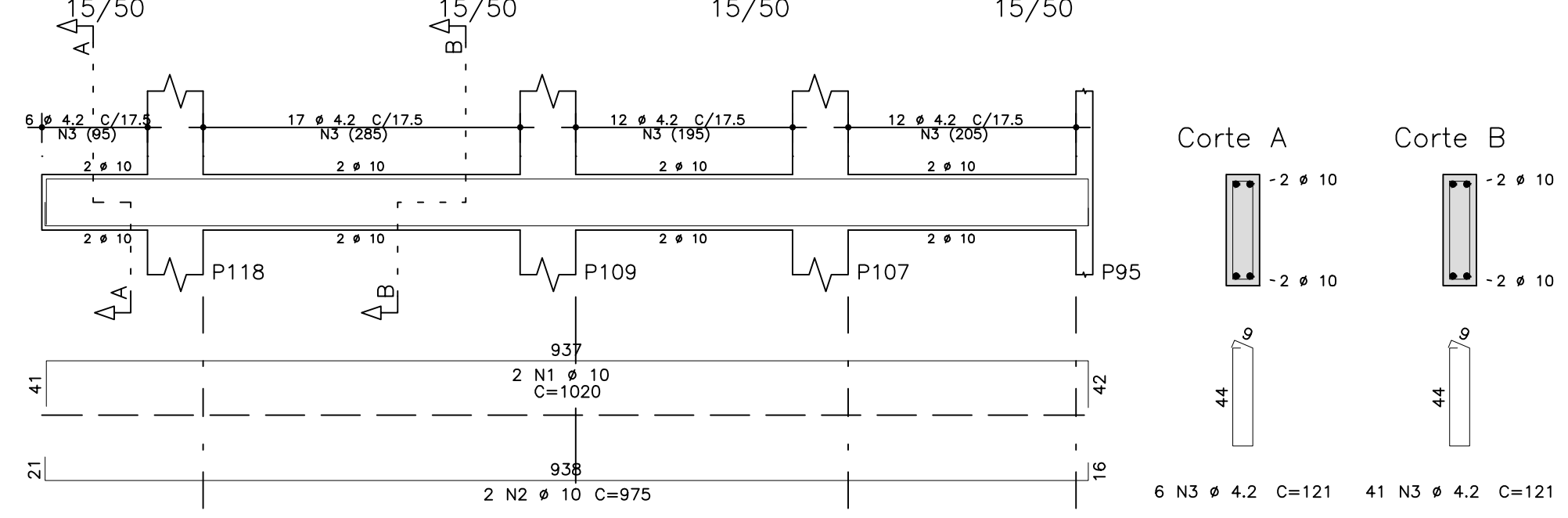
V112



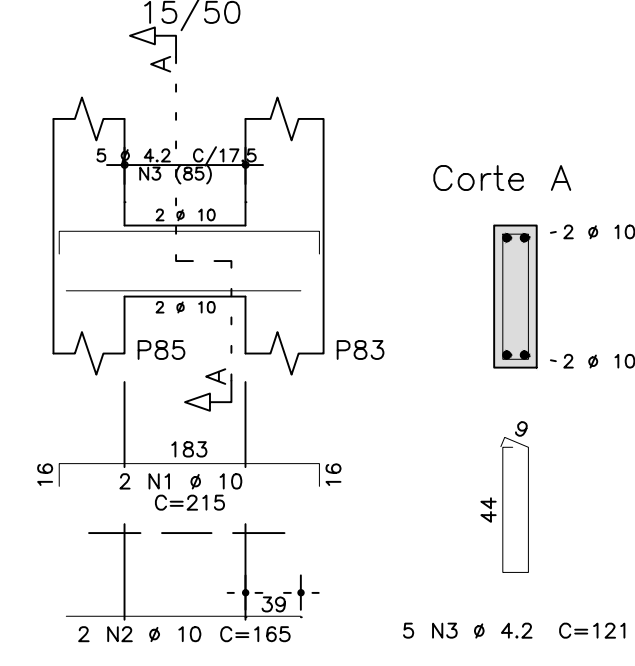
V108



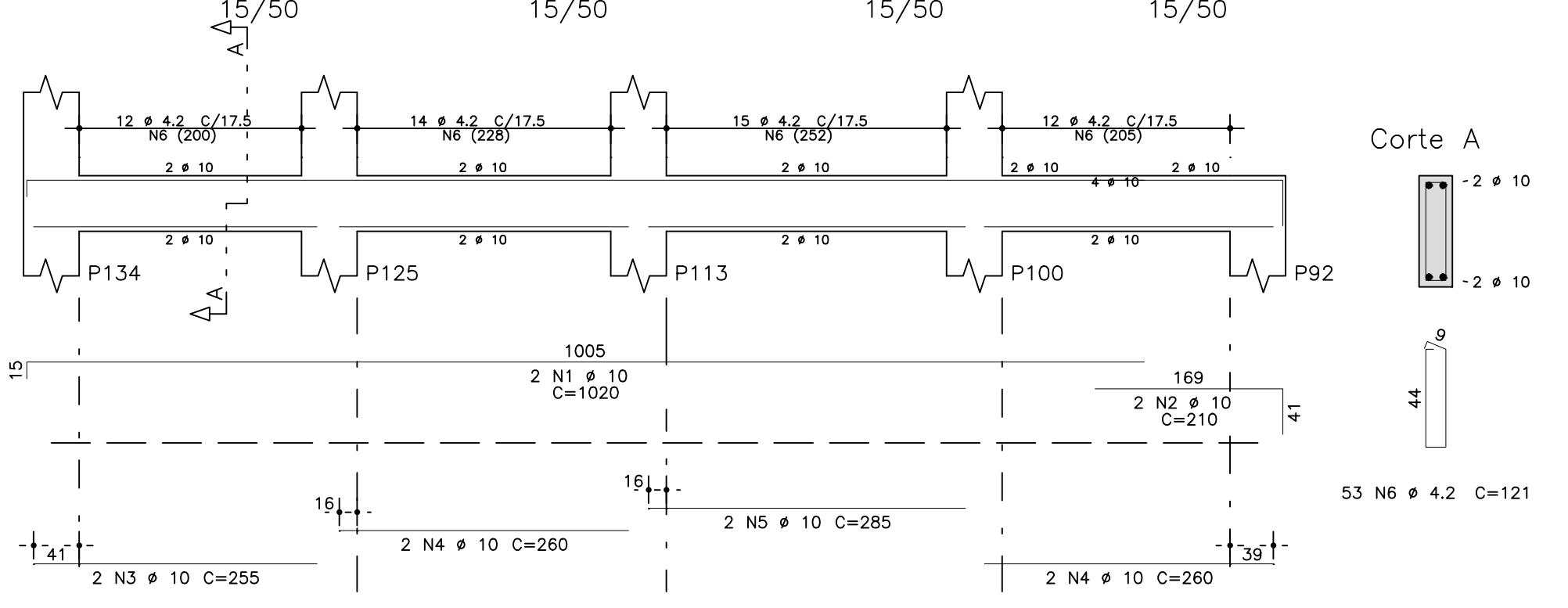
V173



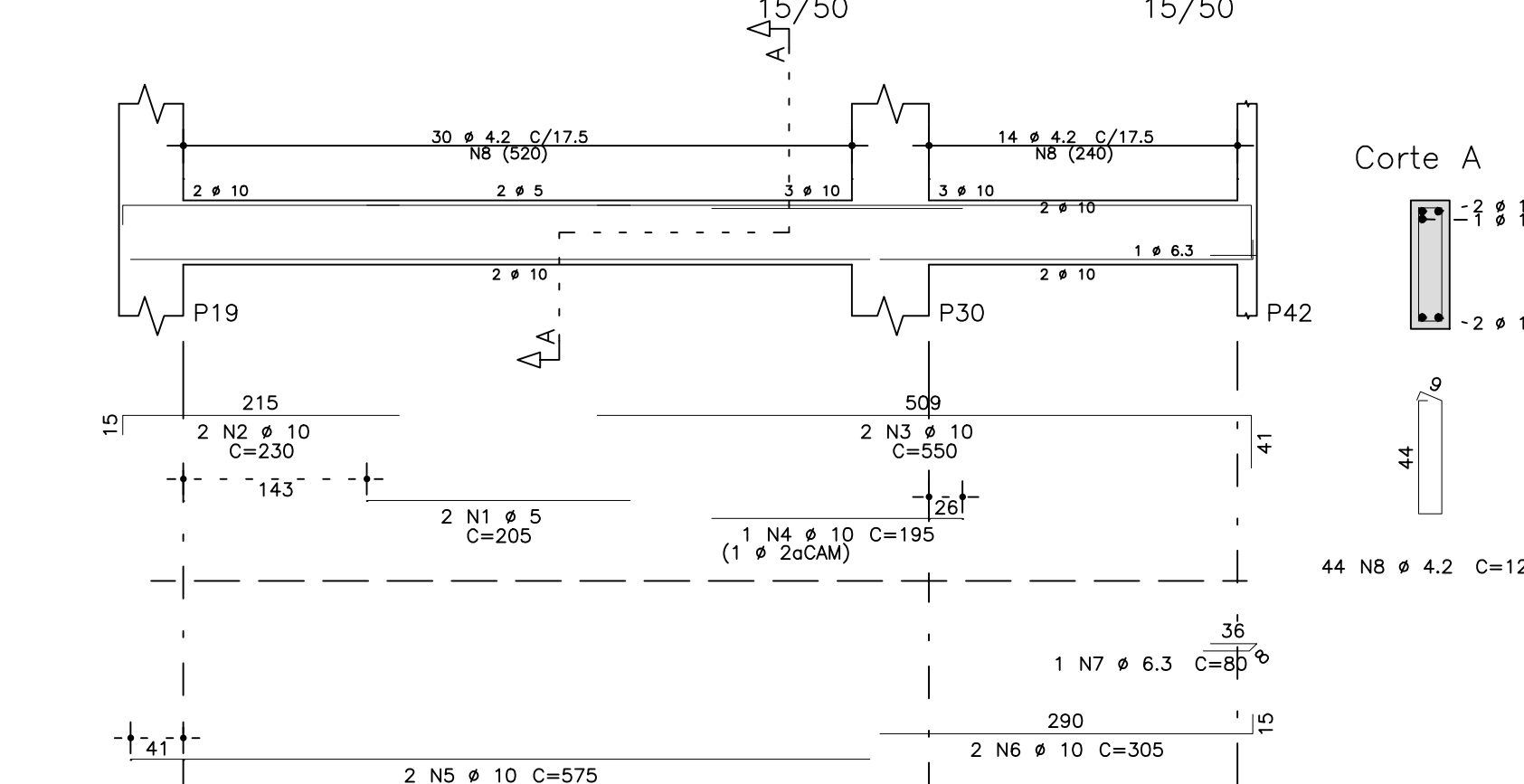
V144



V161



V158



| AÇO | POS | BIT (mm) | QUANT | COMPRIMENTO | |
|------|-----|-------------|-------|--------------|---------------|
| | | | | UNIT (cm) | TOTAL (cm) |
| V108 | 50A | 1 | 10 | 2 | 1035 |
| | 50A | 2 | 10 | 2 | 715 |
| | 50A | 3 | 10 | 2 | 395 |
| | 50A | 4 | 10 | 2 | 785 |
| | 50A | 5 | 10 | 2 | 415 |
| | 50A | 6 | 6.3 | 2 | 80 |
| | 60B | 7 | 4.2 | 86 | 121 |
| V112 | 60B | 1 | 5 | 2 | 270 |
| | 50A | 2 | 10 | 2 | 285 |
| | 50A | 3 | 10 | 1 | 180 |
| | 60B | 4 | 5 | 2 | 410 |
| | 50A | 5 | 16 | 2 | 635 |
| | 50A | 6 | 10 | 2 | 175 |
| | 50A | 7 | 10 | 2 | 785 |
| | 50A | 8 | 10 | 2 | 825 |
| | 50A | 9 | 10 | 1 | 390 |
| | 60B | 10 | 4.2 | 87 | 141 |
| | 50A | 11 | 6.3 | 6 | 767 |
| | 50A | 12 | 6.3 | 6 | 822 |
| V123 | 60B | 1 | 5 | 2 | 340 |
| | 50A | 2 | 12.5 | 2 | 290 |
| | 50A | 3 | 10 | 2 | 1105 |
| | 50A | 4 | 10 | 2 | 215 |
| | 50A | 5 | 10 | 2 | 785 |
| | 50A | 6 | 10 | 2 | 825 |
| | 50A | 7 | 6.3 | 1 | 80 |
| | 60B | 8 | 4.2 | 87 | 141 |
| | 50A | 9 | 6.3 | 6 | 767 |
| | 50A | 10 | 6.3 | 6 | 480 |
| | 50A | 11 | 6.3 | 6 | 365 |
| V144 | 50A | 1 | 10 | 2 | 215 |
| | 50A | 2 | 10 | 2 | 165 |
| | 60B | 3 | 4.2 | 5 | 121 |
| V158 | 60B | 1 | 5 | 2 | 205 |
| | 50A | 2 | 10 | 2 | 230 |
| | 50A | 3 | 10 | 2 | 550 |
| | 50A | 4 | 10 | 1 | 195 |
| | 50A | 5 | 10 | 2 | 575 |
| | 50A | 6 | 10 | 2 | 305 |
| | 50A | 7 | 6.3 | 1 | 80 |
| | 60B | 8 | 4.2 | 44 | 121 |
| V161 | 50A | 1 | 10 | 2 | 1020 |
| | 50A | 2 | 10 | 2 | 210 |
| | 50A | 3 | 10 | 2 | 255 |
| | 50A | 4 | 10 | 4 | 260 |
| | 60B | 5 | 10 | 2 | 285 |
| V173 | 50A | 1 | 10 | 2 | 1020 |
| | 50A | 2 | 10 | 2 | 975 |
| | 60B | 3 | 4.2 | 47 | 121 |

| RESUMO AÇO CA 50-60 | | | |
|---------------------|-------------|--------------|--------------|
| AÇO | BIT (mm) | COMPR (m) | PESO (kg) |
| 60B | 4.2 | 530 | 58 |
| 60B | 5 | 25 | 4 |
| 50A | 6.3 | 195 | 48 |
| 50A | 10 | 301 | 186 |
| 50A | 12.5 | 6 | 6 |
| 50A | 16 | 13 | 20 |
| Peso Total 60B = | | | 62 kg |
| Peso Total 50A = | | | 259 kg |

fcck 250. kg/cm2

| | |
|---|---|
| Schuring & Schuring Ltda. Escritório Técnico B.E.SCHURING - Projetos de Engenharia Av. XV de Novembro, 489 - Porto 2o. Andar - Cuiabá MT Fone:(55) 321.8999 - Fax:(55) 623.5066 - Email - schuring@terra.com.br | |
| PROJETO: PREFEITURA MUNICIPAL VARZEA GRANDE MT RESP. TEC. EXECUCÃO: AUTORES DO PROJETO: Benedito Eliseu Schuring Eng.Civil- CREA 715/D-MT Andre Luiz Schuring Eng.Civil- CREA 8697/D-MT | OBRA: EMEB ALINO FERREIRA MAGALHAES END.: AV. Verdão esq. c/ Rua "B" PARQUE DO LAGO - VARZEA GRANDE ASSUNTO: DET VIGAS BALDRAME FOLHAS DETALHADAS V108 / V112 / V123 / V144 / V158 / V161 FOL: 250 ESCALA: 1:50 VERIFICAR MEDIDAS NA OBRA DATA: FOLHA No. 30 |